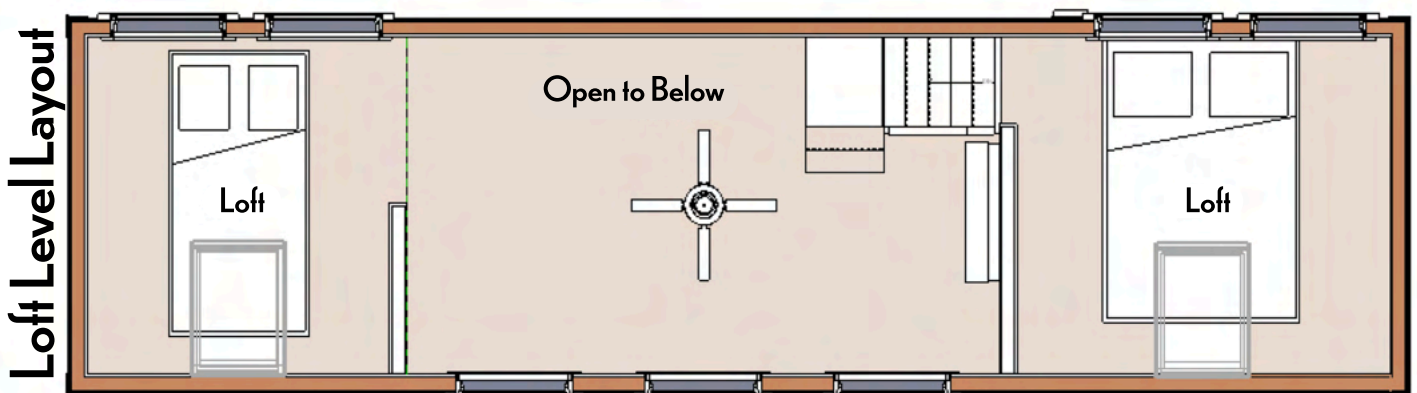
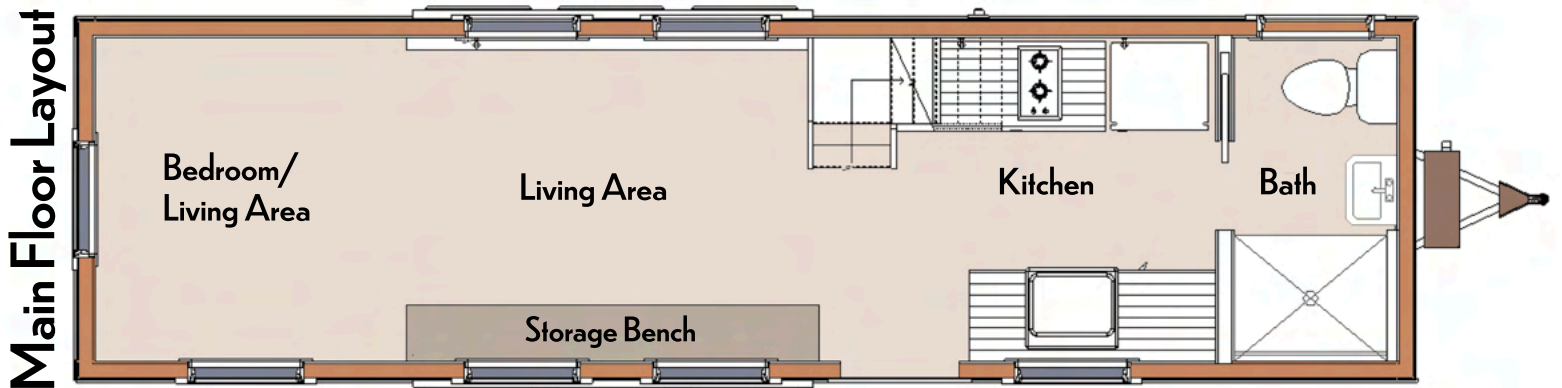




# the Allagash

Thank you for considering Tiny Homes of Maine to provide you with a quality built tiny home. This 8x30 Allagash model is a combination of several features that include the option for a main floor bedroom and two lofts. We use high-quality materials to build well insulated, efficient tiny homes that can withstand any harsh climate. The Allagash weighs approximately 14,000 pounds and can be towed with a one ton truck. Our building facility is located in Houlton, ME and we deliver throughout the United States. You can place an order for the standard model or customize with additional features.



# the Allagash

## Features Included in Base Price

- Finely crafted home with an option for a main floor bedroom
- Triple axle 21k GVWR trailer base with 4 leveling crank jacks
- 4 tie-down D-rings
- Galvanized flashing underneath
- Stairs to access one loft and a ladder to the other
- Standing seam metal roof
- FIFTEEN 400 Series Andersen Awning and Casement Windows (black exterior and pine interior) and insect screens for each
- 2 egress roof windows - one in each loft
- Full glass outswing door with internal adjustable mini blinds
- Closed cell spray foam in 2x6 roof
- Rockwool insulated 2x4 walls
- 2" Ridged Foam and Rockwool insulation in sub-floor
- Mini split heat pump (electric heating, cooling & dehumidifying) & condenser mounted on the tongue end
- Stainless steel under mount sink with pull-down spray faucet
- American Walnut butcher block counter tops
- Self-close white kitchen cabinets
- Two burner electric cooktop
- Vented range hood
- 10 cu. Ft. Refrigerator
- Under counter washer/dryer combo (hook-up in the kitchen)
- Bathroom pocket door
- Large 34"x42" shower
- Panasonic bathroom exhaust fan
- Vanity sink with cabinet
- Natures Head composting toilet
- Recessed LED lighting on dimmer switches
- Modern ceiling fan with a light
- All pine interior tongue and groove walls treated with pickled white stain
- Pine bead board ceiling stained in Provincial
- LifeProof vinyl plank waterproof flooring throughout
- 9' built-in storage bench
- Exterior pine trim and clapboard treated with natural color stain or paint
- 50amp electric service and water hook up

